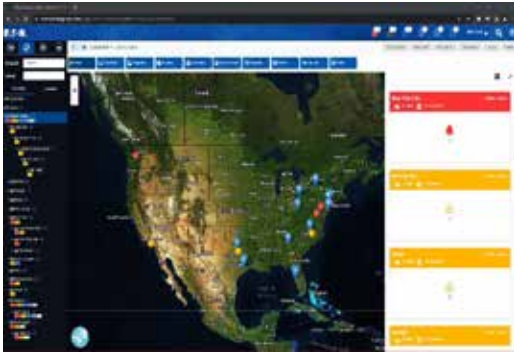


Asset Performance Management (APM)



Product overview

APM communications 64-bit architecture supports

- Updating all integrated systems, devices, and parameters based on subscription
- Vendor-neutral software with an extensive library of device models available
- Modbus TCP, BACnet IP, OPC UA, SNMP
- Dashboard, device, single line, and geographic maps
- Email & SMS alarm notifications
- Standard reports available on demand

Product snapshot

Asset Performance Management (APM) is a highly customizable web-based software platform that can be used by many customers of varying disciplines to monitor, trend, analyze, predict, and troubleshoot data for all their assets.

APM supports monitoring of multiple systems such as:

Power

Electrical distribution equipment (switch gear, panels, motor control centers (MCC), etc...), power meters, branch circuit monitors, trip units, protective relays, Uninterruptible Power Supplies (UPS), generators.

Environmental

HVAC, chillers, pumps, condensers, temp/humidity, flow, and chilled water.

Systems and Sub-systems

leak detection, fuel management, battery monitoring, security, fire suppression, weather monitoring, and photovoltaic systems.

Support available for:

- One-line diagrams
- True redundancy or high availability
- Alarm management and event notifications
- Role and user management
- Onsite or offsite instructor led training upon request
- Customizable customer care agreements for software, hardware, or onsite engineering services
- Engineering, hardware, project management, device library development, customized server configuration, system architecture, contractor drawing packages, and turnkey installation



Powering Business Worldwide

Minimum server hardware requirements

To run APM (all-in-one) server, you’ll need a server class machine with a minimum 8-core / 16-thread processor (Average CPU Mark rating of 20,000 or above), 64GB of RAM, 2 TB of free drive space, and 1Gb Ethernet interface. For the best performance, it is recommended to have an additional 32GB of RAM, additional 2 TB of free drive space (for RAID 6 configuration), and an additional 1Gb Ethernet interface.

Supported software

Linux operating systems	Release
Red Hat Enterprise Linux (x64)	8.4
	8.5
	8.6
Oracle Linux (x64)	8.4
	8.5
	8.6
Virtual Machine Hypervisor	Release
VMware ESXi	6.8
	7.0u2

Supported database & webserver platforms

- PostgreSQL Server 13.5.0 (included with installation)
- Tomcat Server 9.0.64 (included with installation)
- InfluxDB Client 3.1.0 (included with installation)

Supported browsers

WebViews / WebConfig / WebAdmin

- HTML 5 compatible version browsers

Device Protocols supported

- Modbus TCP
- BACnet IP
- OPC UA
- SNMP

Supported interfaces to Building Automation System (BAS), Building Management System (BMS), Data Center Infrastructure Management (DCIM), and other integrated systems

- Based on protocols mentioned above (ref. section “APM communications 64-bit architecture supports”)

Eaton
1000 Eaton Boulevard
Cleveland, OH 44122
United States
Eaton.com

© 2023 Eaton
All Rights Reserved
Printed in USA
Publication No. TD152034EN
May 2023



Eaton is a registered trademark.
All other trademarks are property of their respective owners.