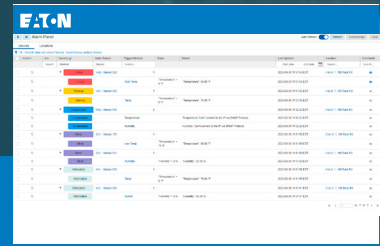


Asset Performance Management  
Brightlayer Industrial suite

Optimize your  
plant operations  
from the assets that  
power your production

**EATON**

*Powering Business Worldwide*



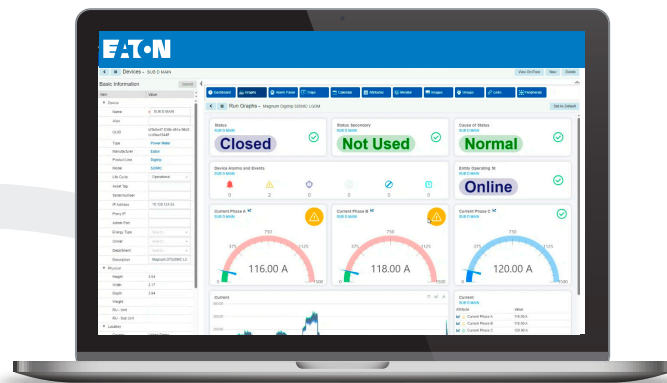
## Gain insights that reduce risks to your productivity



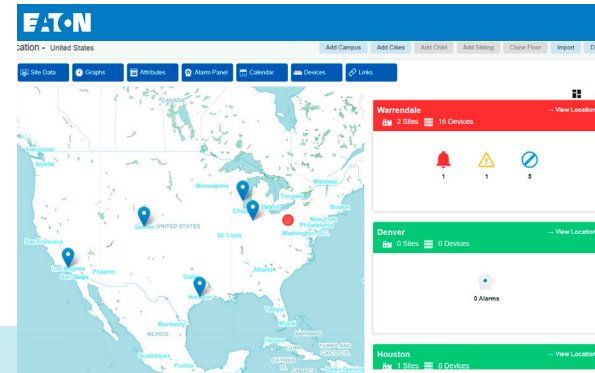
### Asset Performance Management alerts you to issues in your critical assets before they lead to damage or downtime

Asset Performance Management is a software solution that aggregates data from the critical assets that power your operation. Asset Performance Management is designed to offer users a more meaningful look across your operations, including device-specific, location-based and aggregated data essential for:

- + Reducing unplanned downtime with detailed, actionable alerts
- + Improving labor efficiency and safety
- + Supporting crucial business decisions with electrical insights
- + Optimizing maintenance of electrical equipment
- + Supporting environmental and sustainability goals
- + Scaling insights from assets through enterprise with flexible views and configurable dashboards



Asset Performance Management provides data collection, contextualized visualizations, and actionable insights designed to support the specific requirements of manufacturing and process industries.



### Unlock new data and insights

Organize and optimize your critical assets with intuitive and customizable visual dashboards that capture metering, power and energy quality data and insights. Alerts empower you and your teams to identify anomalies and proactively respond before they cause damage or disrupt your operations. Gain a better understanding of your electrical equipment using:

- + Customizable trends, charts and alerts
- + Equipment and energy data
- + One-line diagrams
- + Energy waveforms
- + Navigation to the asset level

### Role-based access and insights

Asset Performance Management makes it easy for various operational teams to seamlessly access, manage, and share the critical data they need with intuitive dashboards, customizable management and reporting tools, and role-based settings and capabilities designed to optimize the experience of each member of your team with:

- + Role-based and user-specific access
- + Actionable dashboard views
- + Alerts targeted to specific users
- + Views configured to provide what specific users need to see

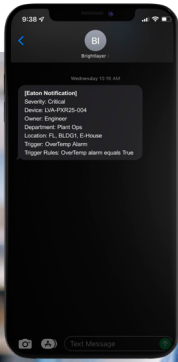
### Timely alerts for risk avoidance

With Asset Performance Management's intelligent alert system, you and your teams will be empowered to identify issues and mitigate potential disruptions like outages or technology failures that could otherwise lead to costly performance and operational losses. Configurable text and email notifications will alert your team to potential problems so they can prioritize, proactively respond, and prevent further complications that could lead to unplanned downtime.

### Robust exporting capabilities

Asset Performance Management offers visibility into user-centric and device-specific data. Events in the lifecycle of monitored assets and devices are digitally recorded and can be exported. Asset Performance Management makes it simple to create, share, export, and archive data related to equipment issues and compliance requests.





# Avoid risk and optimize operations with Asset Performance Management

Connect with an Eaton representative to request a demo or learn how electrical insights from Asset Performance Management can support your operations.

Learn more about Asset Performance Management at:  
[eaton.com/AssetPerformanceManagement](https://eaton.com/AssetPerformanceManagement)



**Eaton**  
1000 Eaton Boulevard  
Cleveland, OH 44122  
United States  
Eaton.com

©2023 Eaton  
All Rights Reserved  
Printed in USA  
Publication No. BR145003EN  
September 2023

Eaton is a registered trademark.

All other trademarks are property of their respective owners.

Follow us on social media to get the latest product and support information.

